

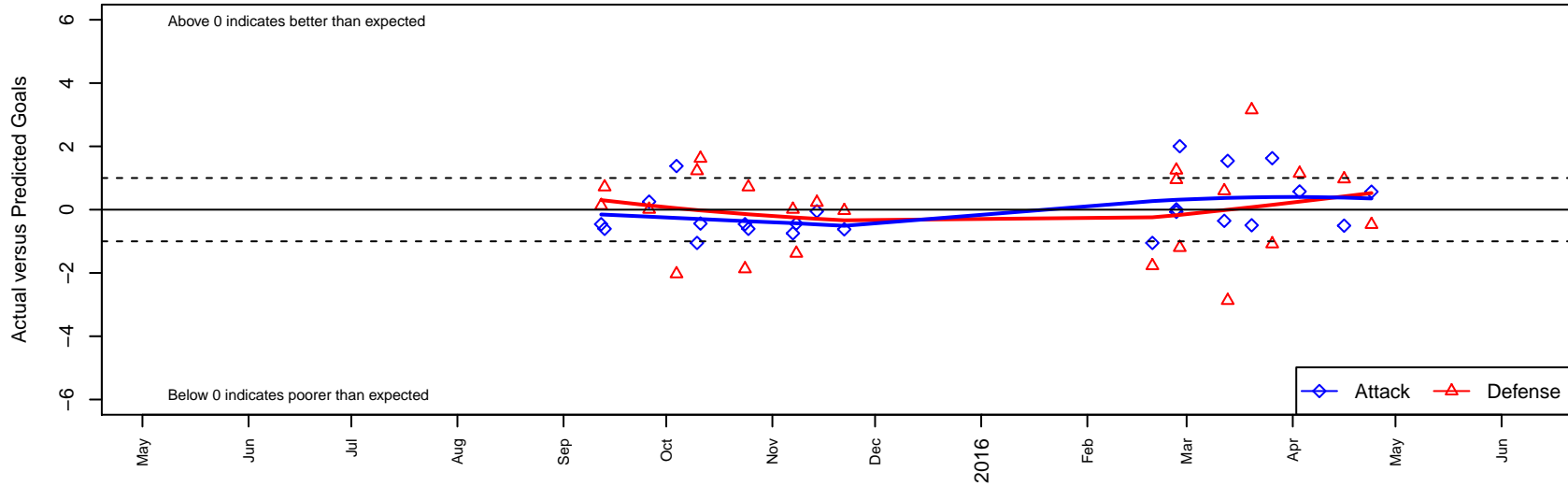
# Nortac Sparta White B01

FC Tacoma  
 Tacoma, WA  
 B01 total strength=742  
 attack=0.87 defense=0.77  
 fall league = PSPL Classic 2 Green U14  
 spr league = Spr PSPL Classic 2 U14  
 notes= Nortac Sparta White -> FC  
 Tacoma White -> Nortac  
 Sparta White

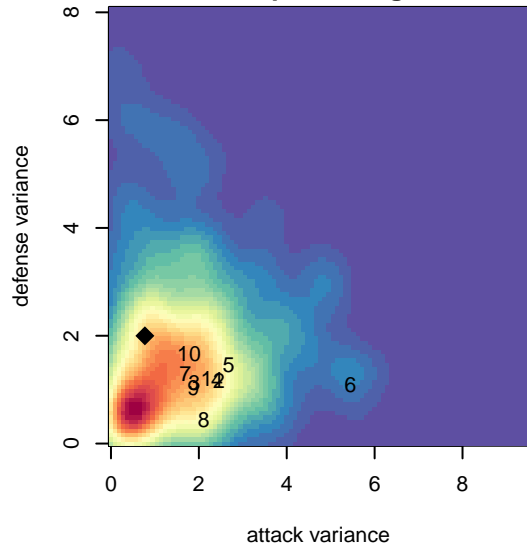
alt names used:  
 NORTAC SPARTA B01 WHITE  
 NORTAC SPARTA B01 White  
 NORTAC Sparta B01 White

Venues played:  
 2015 PSPL Classic 2 Green U14  
 2015 Spr PSPL Classic 2 U14  
 2015 Blue Mtn Exchange BU13/BU14

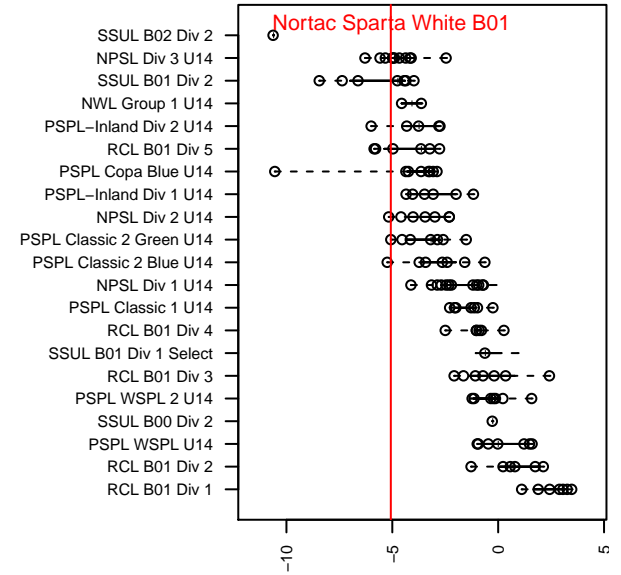
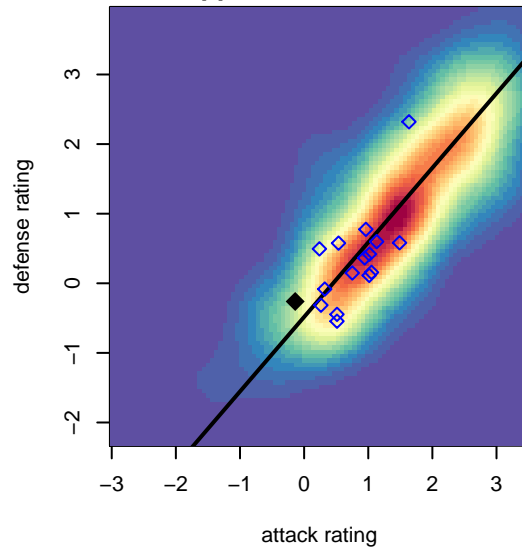
**Nortac Sparta White B01**  
 Dots are actual minus expected GF (blue circles) and GA (red triangles).  
 Blue line is smoothed change in attack strength. Red is smoothed change in defense strength.



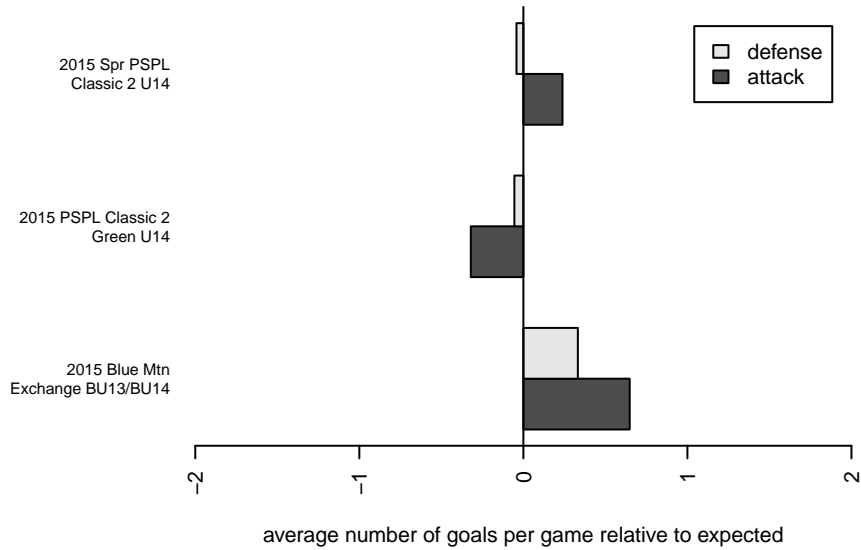
**attack and defense variance (black dot)  
relative to other teams  
and top 10 in region**



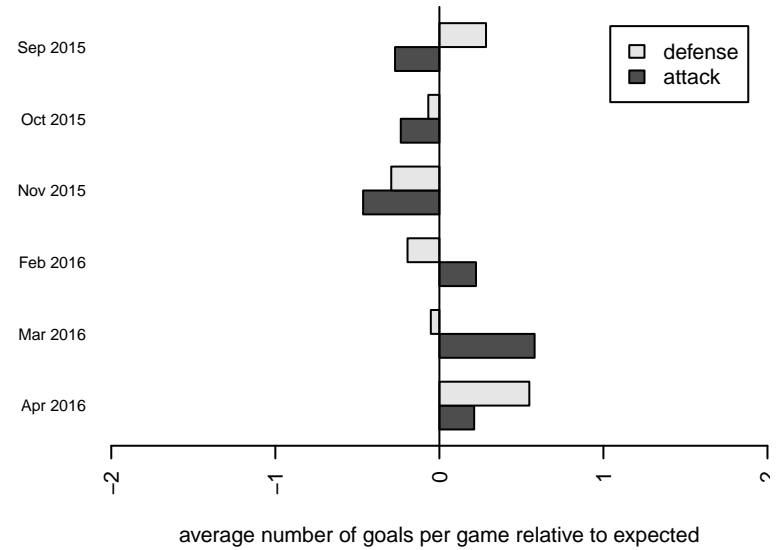
**attack and defense rating  
relative to others at age  
and all opponents in last 13 months**



**Performance relative to 13 month average**



**Performance relative to 13 month average**



| date       | home                             |   | away                             |   | venue                            | pred.home | pred.away |
|------------|----------------------------------|---|----------------------------------|---|----------------------------------|-----------|-----------|
| 2016-04-24 | Nortac Sparta White B01          | 1 | NW United Classic B01            | 2 | 2015 Spr PSPL Classic 2 U14      | 0.43      | 1.53      |
| 2016-04-16 | Wenatchee Valley United B01      | 2 | Nortac Sparta White B01          | 0 | 2015 Spr PSPL Classic 2 U14      | 2.97      | 0.51      |
| 2016-04-03 | Shoreline Sportsverrou B01       | 3 | Nortac Sparta White B01          | 1 | 2015 Spr PSPL Classic 2 U14      | 4.15      | 0.43      |
| 2016-03-26 | MVP Rapids White B01             | 3 | Nortac Sparta White B01          | 2 | 2015 Spr PSPL Classic 2 U14      | 1.92      | 0.37      |
| 2016-03-20 | Nortac Sparta White B01          | 0 | Washington East SC Piger B01     | 1 | 2015 Spr PSPL Classic 2 U14      | 0.49      | 4.15      |
| 2016-03-13 | Nortac Sparta White B01          | 2 | PCSC Cruz Azul B01               | 9 | 2015 Spr PSPL Classic 2 U14      | 0.46      | 6.13      |
| 2016-03-12 | Nortac Sparta White B01          | 0 | Washington East SC Davis B01     | 3 | 2015 Spr PSPL Classic 2 U14      | 0.35      | 3.59      |
| 2016-02-28 | SSC Shadow United B01            | 3 | Nortac Sparta White B01          | 3 | 2015 Blue Mtn Exchange BU13/BU14 | 1.80      | 1.00      |
| 2016-02-27 | Nortac Sparta White B01          | 1 | Moscow United B01                | 1 | 2015 Blue Mtn Exchange BU13/BU14 | 0.99      | 1.95      |
| 2016-02-27 | Nortac Sparta White B01          | 0 | 3 Rivers Black B01               | 5 | 2015 Blue Mtn Exchange BU13/BU14 | 0.07      | 6.25      |
| 2016-02-20 | Impact FC Black B01              | 4 | Nortac Sparta White B01          | 0 | 2015 Spr PSPL Classic 2 U14      | 2.23      | 1.05      |
| 2015-11-22 | NK Havoc B01                     | 4 | Nortac Sparta White B01          | 0 | 2015 PSPL Classic 2 Green U14    | 3.97      | 0.62      |
| 2015-11-14 | Nortac Sparta White B01          | 1 | Impact FC Black B01              | 2 | 2015 PSPL Classic 2 Green U14    | 1.05      | 2.23      |
| 2015-11-08 | KVJSA Ellensburg FC Chargers B01 | 5 | Nortac Sparta White B01          | 0 | 2015 PSPL Classic 2 Green U14    | 3.62      | 0.44      |
| 2015-11-07 | Nortac Sparta White B01          | 0 | Tracyton B01                     | 2 | 2015 PSPL Classic 2 Green U14    | 0.75      | 2.01      |
| 2015-10-25 | RSA Elite White 2001B            | 2 | Nortac Sparta White B01          | 0 | 2015 PSPL Classic 2 Green U14    | 2.72      | 0.61      |
| 2015-10-24 | PCSC Cruz Azul B01               | 8 | Nortac Sparta White B01          | 0 | 2015 PSPL Classic 2 Green U14    | 6.13      | 0.46      |
| 2015-10-11 | Nortac Sparta White B01          | 0 | KVJSA Ellensburg FC Chargers B01 | 2 | 2015 PSPL Classic 2 Green U14    | 0.44      | 3.62      |
| 2015-10-10 | Impact FC Black B01              | 1 | Nortac Sparta White B01          | 0 | 2015 PSPL Classic 2 Green U14    | 2.23      | 1.05      |
| 2015-10-04 | Nortac Sparta White B01          | 2 | NK Havoc B01                     | 6 | 2015 PSPL Classic 2 Green U14    | 0.62      | 3.97      |
| 2015-09-26 | Tracyton B01                     | 2 | Nortac Sparta White B01          | 1 | 2015 PSPL Classic 2 Green U14    | 2.01      | 0.75      |
| 2015-09-13 | Nortac Sparta White B01          | 0 | RSA Elite White 2001B            | 2 | 2015 PSPL Classic 2 Green U14    | 0.61      | 2.72      |
| 2015-09-12 | Nortac Sparta White B01          | 0 | PCSC Cruz Azul B01               | 6 | 2015 PSPL Classic 2 Green U14    | 0.46      | 6.13      |